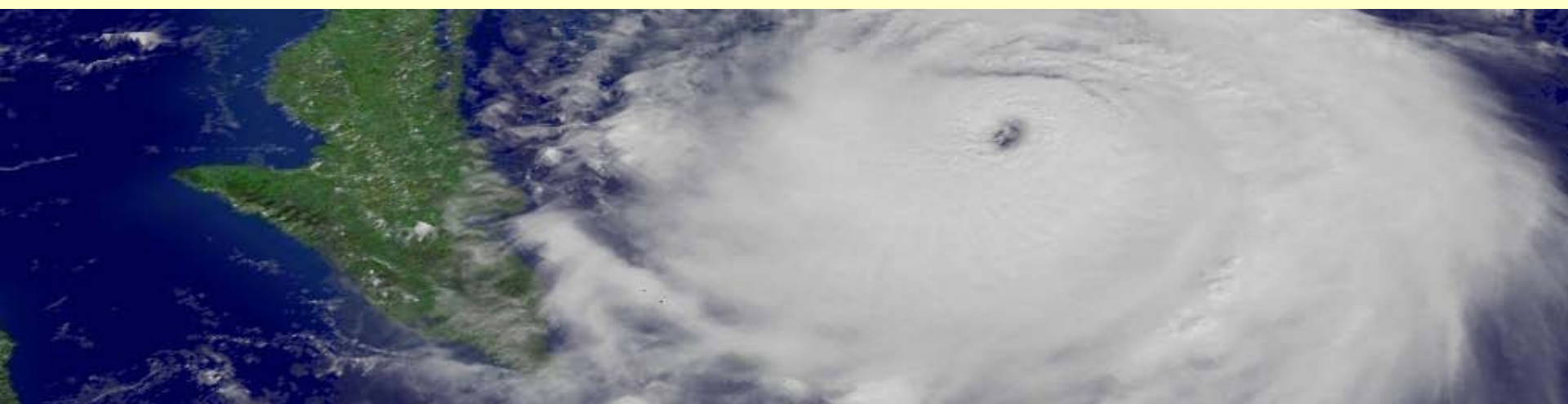
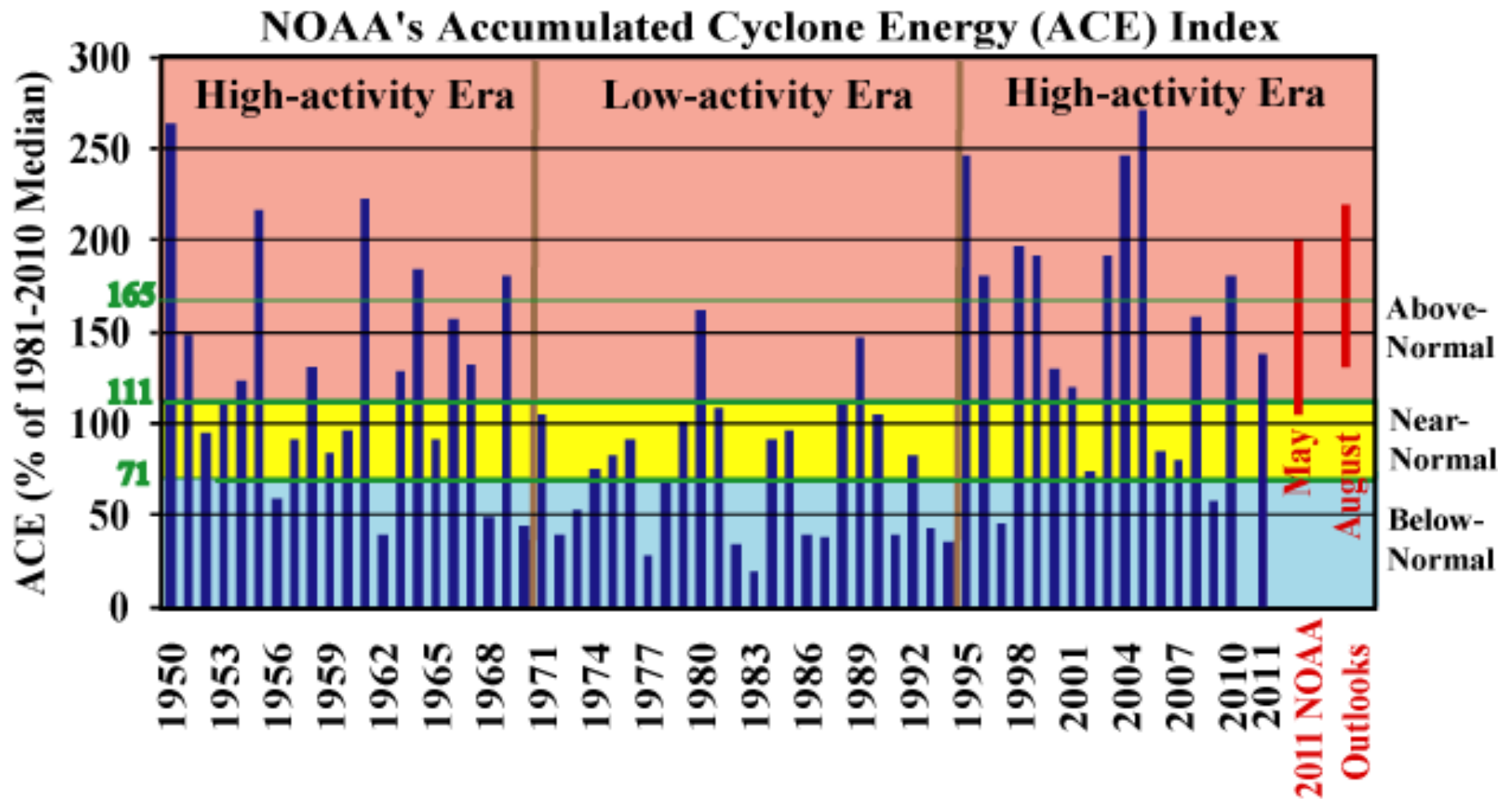


Partnerships - The Key to Tackling Critical Challenges in Tropical Cyclone Operations and Research

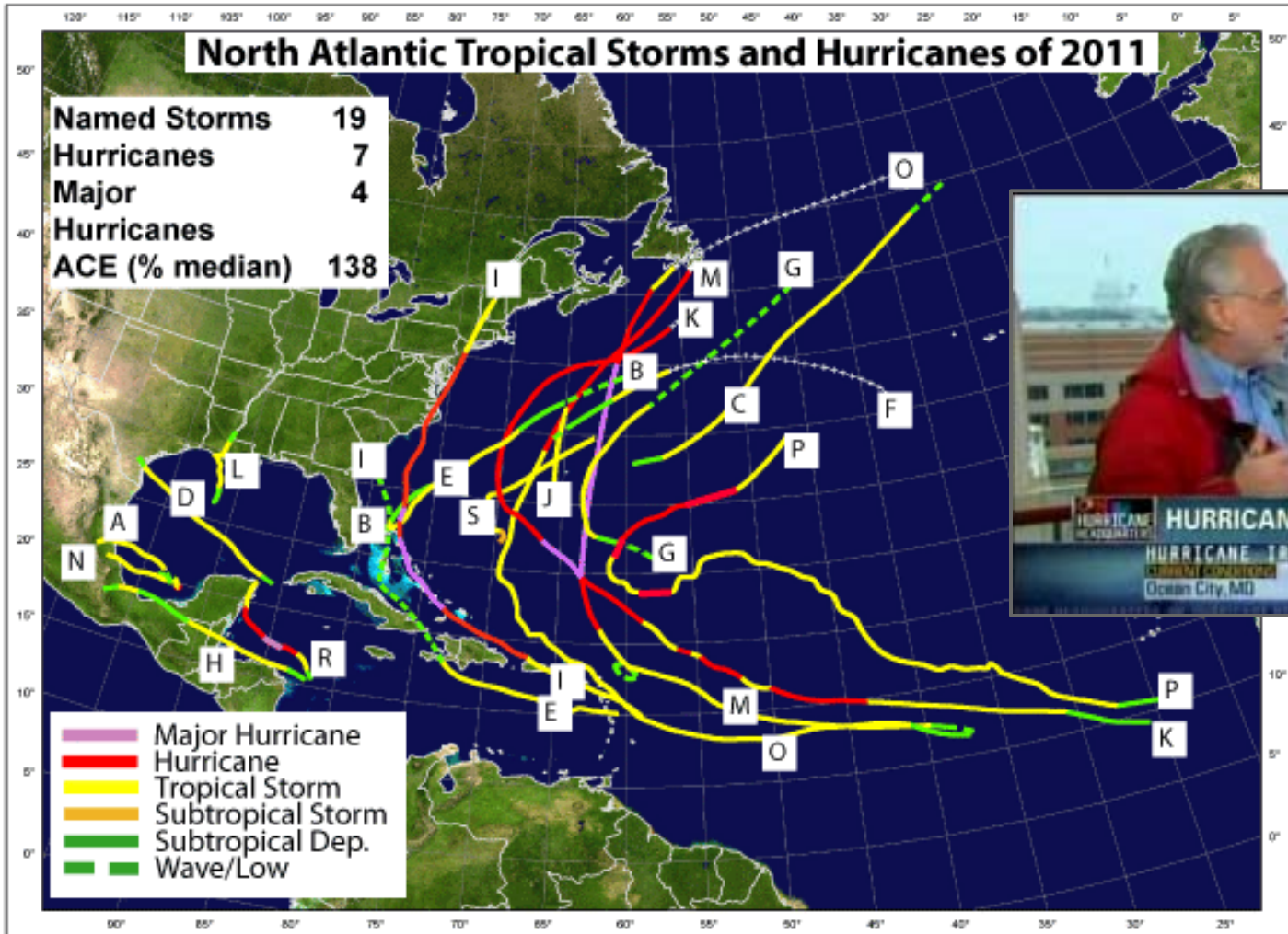


David Caldwell
Director, NWS Office of Climate, Water &
Weather Services
March 5, 2012

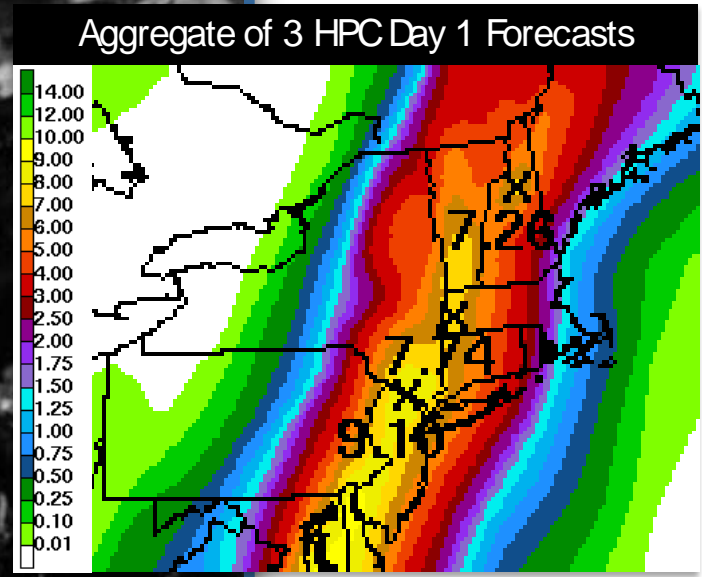
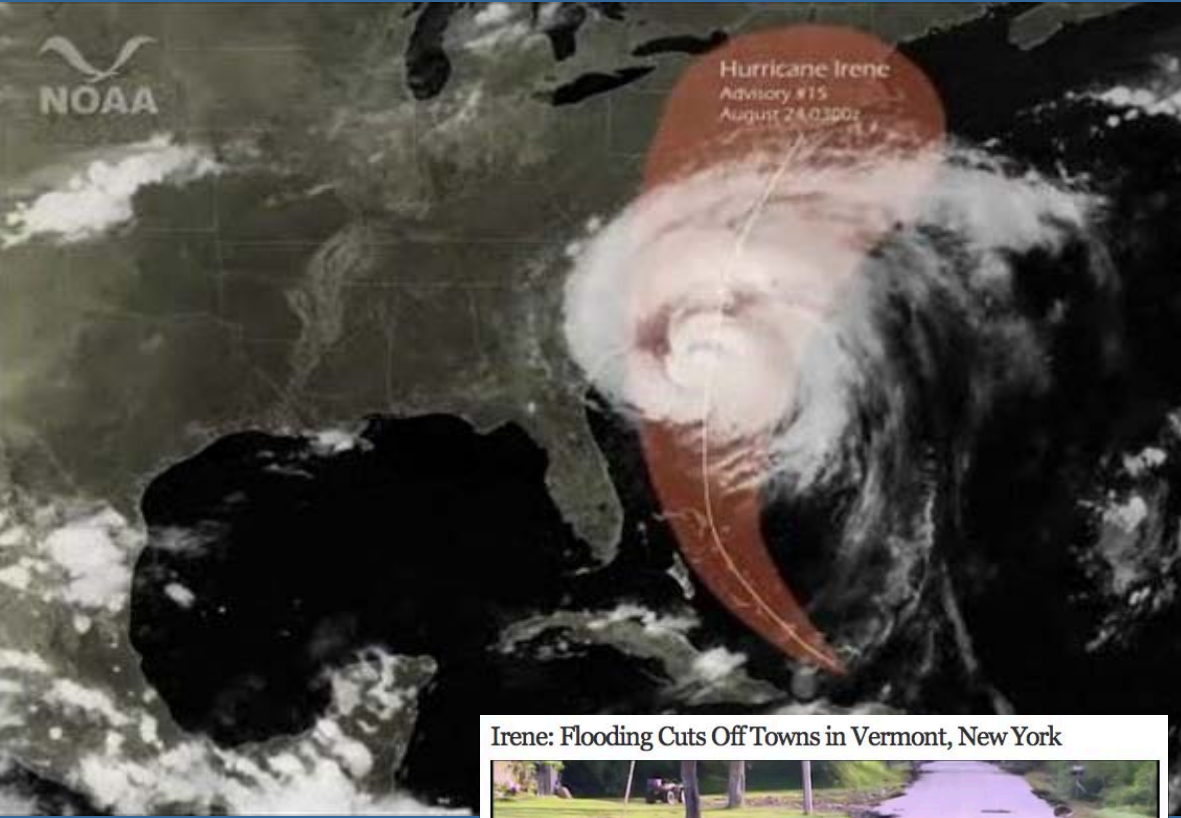
High-Activity Tropical Cyclone Era



2011: Year of High Activity



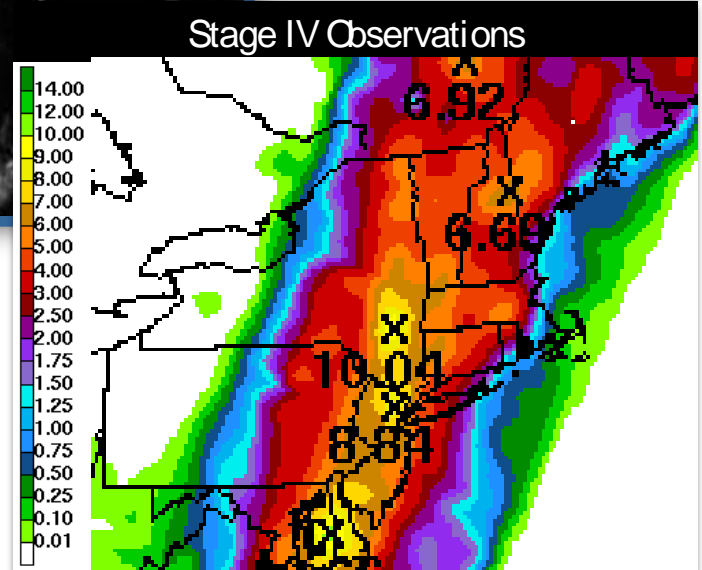
Hurricane Irene

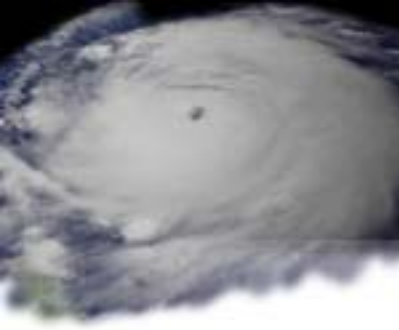


Irene: Flooding Cuts Off Towns in Vermont, New York



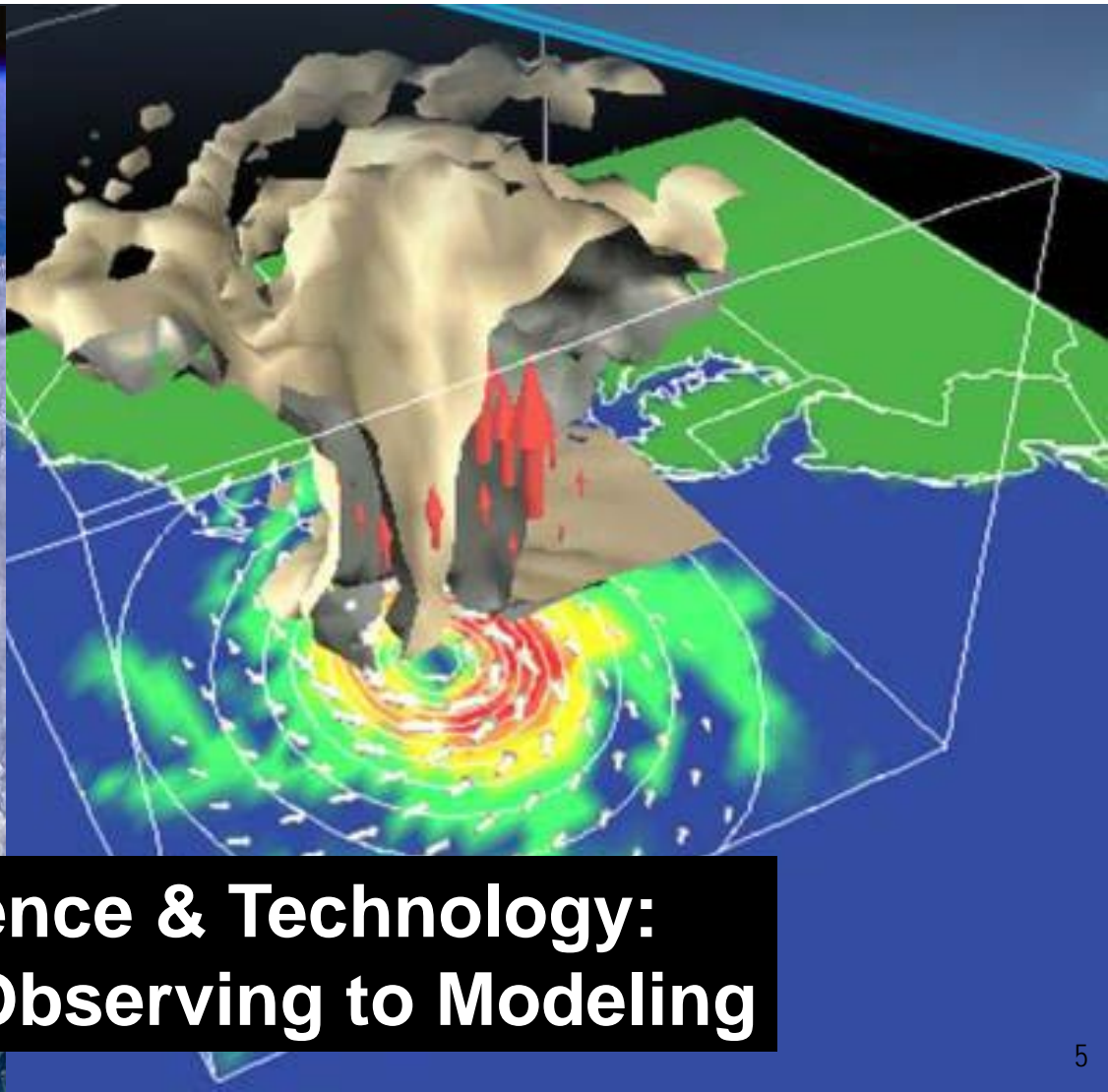
Vermont Communities Isolated by Hurricane Flooding





Shared Strategic Priorities

-Environmental Intelligence to Save Lives



**Science & Technology:
From Observing to Modeling**



Tropical Cyclone Priorities

- † Satellites
 - √ Suomi NPP Launched October 2011
 - √ Joint Polar Satellite System (JPSS)
- † Hurricane Forecast Improvement Project FY13
 - √ Continue to operate HFIP R&D supercomputer located in Boulder, Colorado
 - √ Provide O&M to the HFIP R&D supercomputer through 2015
 - √ Run, in real-time, the current development versions of the Hurricane Forecast Improvement Project (HFIP) models
 - √ Intensity forecasts
- † Improve tropical and extra-tropical storm surge services
 - √ Social and Behavioral Sciences
 - √ Address government partner needs
- † Extend hurricane forecasts beyond five days

Weather-Ready Nation

Society is prepared for and responds to weather-dependent events



Goal: Improve weather decision services for events that threaten lives and livelihoods